



**LILY® SUGAR'N CREAM
SPRING TULIP DISHCLOTH**

MEASUREMENT

Approx 8½ ins [21.5 cm] square.

MATERIALS

Lily Sugar'n Cream (70.9 g/2.5 oz; 109 m/120 yds)
01215 (Robin's Egg) **1 ball**

Size 4.5 mm (U.S. 7) knitting needles **or size needed to obtain gauge.**

GAUGE

20 and 26 rows = 4 ins [10 cm] in stocking st.

ABBREVIATIONS

www.sugarncream.com/glossary

INSTRUCTIONS

Cast on 39 sts.

Knit 5 rows (garter st).

Next row: (RS). K1. *yo. K2tog. Rep from * to end of row.

Knit 5 rows (garter st).

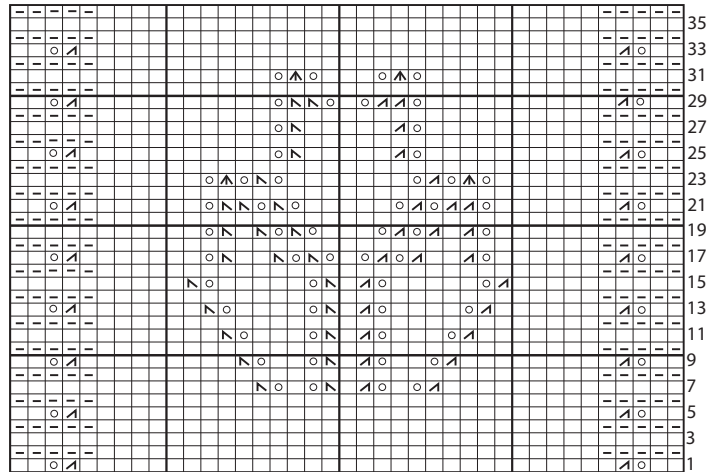
Work rows 1 to 36 of chart, reading RS rows from right to left and WS rows from left to right.

Knit 4 rows (garter st).

Next row: (RS). K1. *yo. K2tog. Rep from * to end of row.

Knit 4 rows (garter st).

Cast off knitwise (WS).



Start Here

Key

☐ = Knit on RS rows, Purl on WS rows

☐ = Purl on RS rows, Knit on WS rows

○ = yo

▤ = ssk

▧ = K2tog

▧ = S11. K2tog. pssso.

